



>> RP-USB102C

2-Port Dual e-SATA II to Express PC Adapter

RP-USB102C enables users to launch Internet with easy installation and lower power consumption via the USB interface. The device also complies with USB2.0 and 1.1 along with 802.3 and 802.3u standards, allowing users to take advantage of the Fast Ethernet speed of up to 100 Mbps and add the networking compatibility to the computer in any environment that encountered. Users would not have to endure the effort opening PC cases anymore.



The low power consumption especially benefits laptop users. It is USB bus-powered instead of the external power and makes it more convenient to carry. Besides Plug & Play, hot inserting/swapping supported, the device makes your peripherals to be connected in a much easier way.

Feature

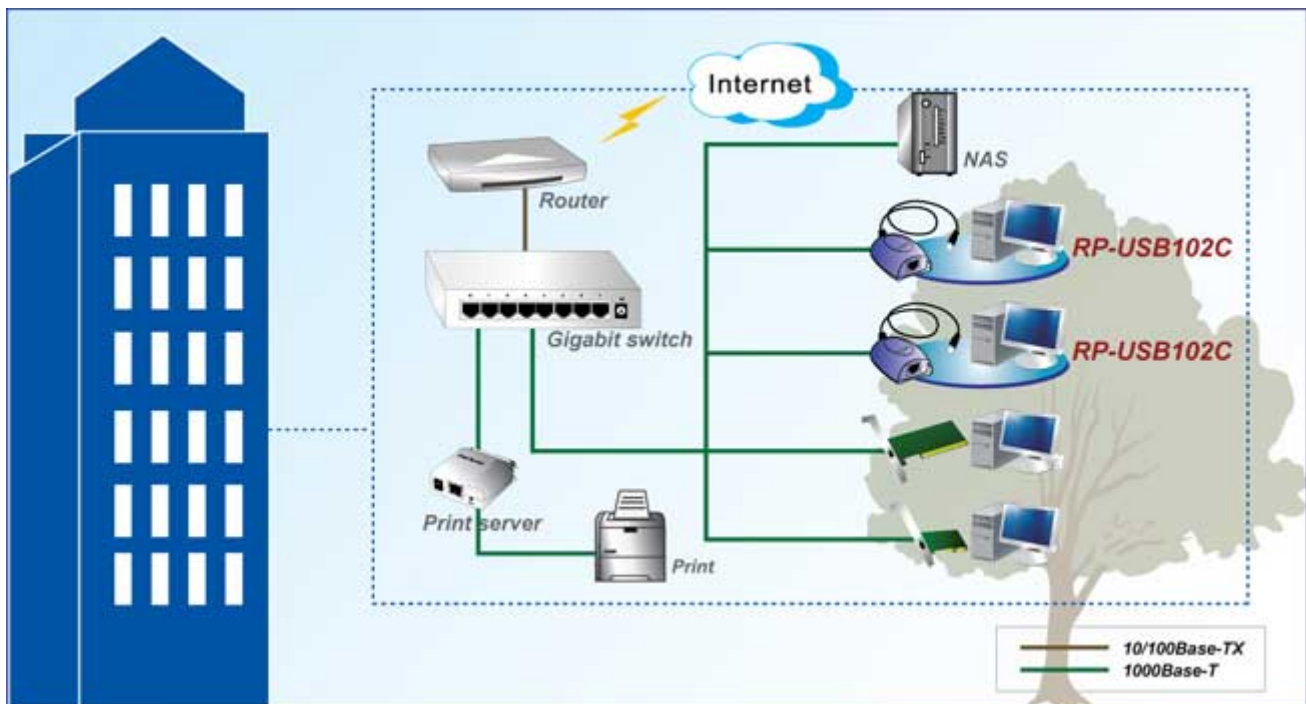
- Universal Serial Bus Rev.1.0, 1.1, 2.0 specification compatible
- IEEE 802.3 10Base-T Ethernet specification compatible
- IEEE 802.3u 100 Base-TX Fast Ethernet specification compatible
- ANSI/IEEE 802.3 Auto-negotiation specification compatible
- Plug and Play with USB devices
- Support 1 upstream USB plug
- Support 1 10/100Mbps Fast Ethernet port
- Support for Self-Powered device configurations
- Extensive diagnostic LED for device status

Specification

Standards	<ul style="list-style-type: none"> • Universal Serial Bus Standard Ver.1.0, 1.1, 2.0 • IEEE 802.3 , IEEE 802.3u 		
Number of Ports	<ul style="list-style-type: none"> • 1 x Upstream plug • 1 x 10/100Mbps Fast Ethernet port 		
Network Data Transfer Rate	Ethernet	10Mbps	(Half Duplex)
		20Mbps	(Full Duplex)
	Fast Ethernet	100Mbps	(Half Duplex)

		200Mbps	(Full Duplex)
	USB	480Mbps	(High Speed)
Connector Upstream	<ul style="list-style-type: none"> • USB type A male 		
Power mode	<ul style="list-style-type: none"> • Bus 		
Diagnostic LEDs	<ul style="list-style-type: none"> • Link/ACT 		
Supported Drivers	<ul style="list-style-type: none"> • Microsoft Windows 98 • Microsoft Windows Me • Microsoft Windows 2000 • Microsoft Windows XP 		
Environment	<ul style="list-style-type: none"> • Operating Temperature : -10°C to 50°C • Operating Humidity: 5%~95% (Non-Condensing) 		

Application



Ordering information

RP-USB102C USB2.0 to Fast Ethernet Adapter