



RP-PEG244I+ | RP-PEG244IF+

24-P Gigabit L2+ Managed PoE Switch, w/ 4 SFP



RP-PEG244IF+, a 24-Port Gigabit L2 Plus Managed PoE Switch, is a standard switch that meets all IEEE 802.3/u/x/z/ab/af standards. The switch includes 20-Port 10/100/1000Mbps TP with PoE function and 4-Port Gigabit TP/SFP Fiber dual media management switch, the RP-PEG244IF+ is an ideal solution for wireless AP, VoIP phones, security video cameras.

The switch can be managed through RS-232 serial port, or through Ethernet port using CLI or Web-based management unit, associated with SNMP agent. With the SNMP agent, the network administrator can logon the switch to monitor, configure and control each port's activity in a friendly way. The overall network management is enhanced and the network efficiency is also improved to accommodate high band width applications. In addition, the switch features comprehensive and useful functions such as DHCP Snooping (Including Option 82), QoS (Quality of Service), Spanning Tree, RSTP/MSTP, VLAN, Port Trunking, Bandwidth Control, Port Security, MVR, SNMP/RMON, LLDP and IGMPv3 Snooping capability via the intelligent software. It is suitable for both metro-LAN and office applications.

Others the switch increase support the Power saving for reduce the power consumption. It could efficient saving the switch power with auto detect the client idle and provides different power.

Feature

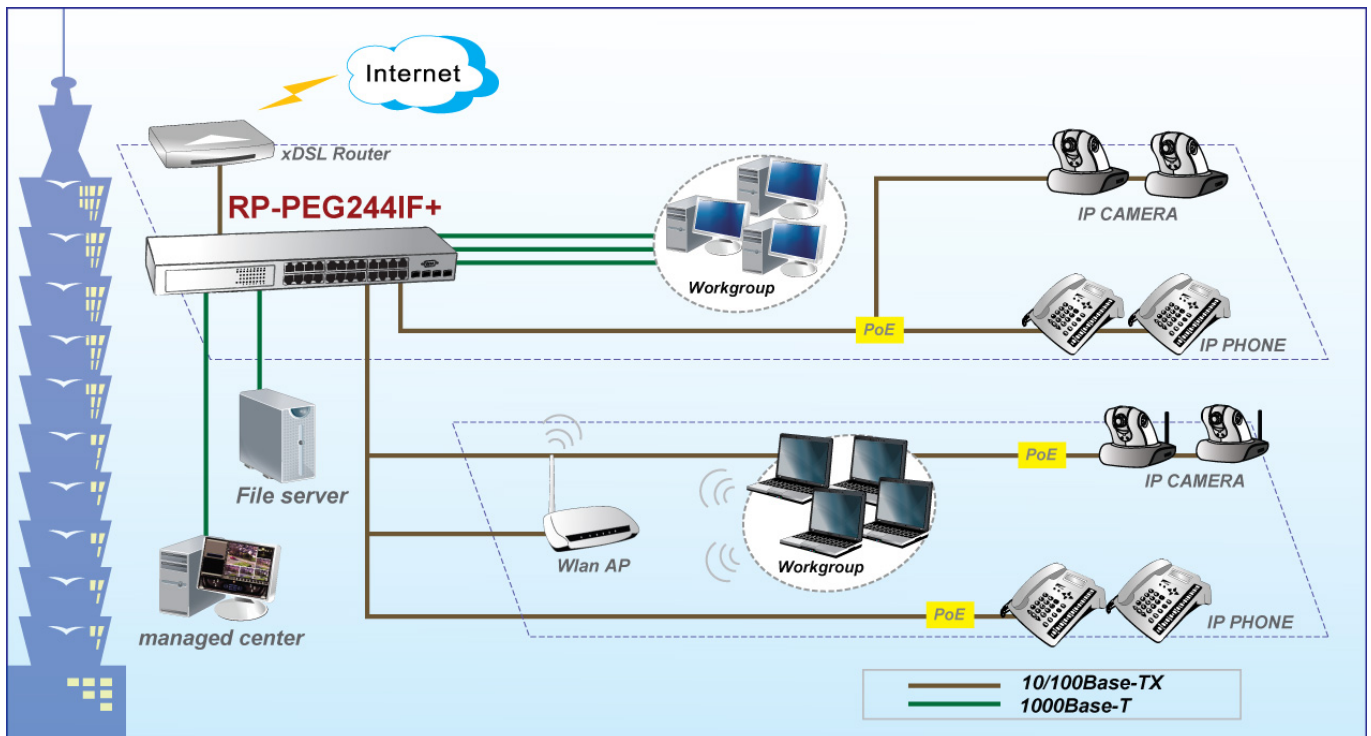
- 4 dual Media for flexible fiber connection
- Support Jumbo Frame size up to 9KB
- IEEE 802.1x Access control improve network security
- Port Mirroring helps supervisor monitoring network
- Support Q-in-Q(Double-tag)
- IEEE802.1q tag-base VLAN, 4094 entries max and port-base VLAN
- IEEE 802.1d Compatible, 802.1w Rapid Spanning Tree and 802.1s Multiple Spanning Tree
- Support IEEE 802.3af compliant
- Multicast VLAN management for IP TV
- IP-MAC-Port binding for LAN security
- Support QoS (QCL/QCE) for traffic control
- Support ACL (Access Control List)
- DHCP Snooping (Including DHCP Option 82)
- Support IGMPv3 snooping and IGMP proxy
- 185 or 380 watts of total power diversified options
- Support "Power saving" for Green Ethernet requirement
- Support LLDP (Link Layer Discovery Protocol)

Specification

Standards	<ul style="list-style-type: none"> • IEEE 802.3 10Base-T Ethernet (twisted-pair copper) • IEEE 802.3u 100Base-TX Ethernet (twisted-pair copper) • IEEE 802.3ab 1000Base-T Ethernet (twisted-pair copper) • IEEE 802.3z 1000Base-SX/LX Ethernet • IEEE 802.3x Flow Control capability • IEEE 802.1q VLAN • IEEE 802.1p Class of Service • IEEE 802.1x Access Control • IEEE 802.1d Spanning Tree • IEEE 802.1w Rapid Spanning Tree • IEEE 802.1s Multiple Spanning Tree • IEEE 802.3ad Link Aggregation Control Protocol (LACP) • IEEE 802.3af PoE
Ports	<ul style="list-style-type: none"> • Port 1 to 20: 10/100/1000 Mbps TP Jack (RJ-45) • Port 21 to 24: 1000Mbps SFP Fiber Module Dual Media Auto Detection • Console Port: DB9 console port
Mac Table Size	<ul style="list-style-type: none"> • 8K
Switching Capacity	<ul style="list-style-type: none"> • 48Gbps switch capacity
Jumbo frame	<ul style="list-style-type: none"> • Supports Jumbo frame, up to 9K
VLAN	<ul style="list-style-type: none"> • Port-base VLAN • IEEE802.1q tag-base VLAN, up to 4k active VLANs • Support the Q-in-Q (Double-tag) • Support MVR (Multicast VLAN Registration)
VSM (Virtual Stacking Management)	<ul style="list-style-type: none"> • Virtual stacking, no extra stacking hardware is required • Distributed stacking, no physical central wiring closet is needed
QoS	<ul style="list-style-type: none"> • Supports Port Based, 802.1p and Diffserv (IPv4) QoS packet classification • Supports two scheduling, WRR and Strict • Supports 802.1p QoS with four level priority queue
Bandwidth Control	<ul style="list-style-type: none"> • Supports bandwidth rating per port ingress and egress rate limit 500Kbps~1000Mbps with 1Kbps
LACP	<ul style="list-style-type: none"> • Port trunking with 12 trunking group • Up to 16 ports for each group
GVRP/GARP	<ul style="list-style-type: none"> • 802.1q with GVRP/ GARP
Port Mirror	<ul style="list-style-type: none"> • Support port mirror
Multicasting	<ul style="list-style-type: none"> • Supports IGMPv3 snooping including active and passive mode • Supports IGMP proxy including active and passive mode
STP/RSTP/MSTP	<ul style="list-style-type: none"> • 802.1d/1w/1s
PoE Specification	<ul style="list-style-type: none"> • 24 IEEE802.3af PoE PSE ports • Endpoint with 48VDC power through RJ-45 pin 1, 2, 3, 6 • PoE-PSE activity LED indicator • Auto detect powered device and consumption levels • Supports per port power consumption monitoring • Smart feature for PD on/off, PD detection, power level, PD status and power feeding priority • Circuit protection to prevent power interference between ports • Supports per port PoE State setting • Supports per port power priority setting • 185 or 380 watts of total power diversified options

Network Security	<ul style="list-style-type: none"> • 802.1x access control for port based and MAC based authentication • Management access policy control • ACL (Access Control List) • IP-MAC-Port binding • DHCP Snooping (Including DHCP Option 82) • SSL/ SSH for Management(Optional by Project Requirement) • TACACS+ for Management Authentication (Optional by Project Requirement)
Storm Control	<ul style="list-style-type: none"> • Unknown Unicast/Broadcast/Multicast Storm Suppression
SNMP agent	<ul style="list-style-type: none"> • Version. 1, 2c • Supports MIB II(RFC1213), RMON MIB(RFC1757), Bridge MIB (RFC 1493), Ethernet MIB(RFC 1643), Enterprise MIB
LED	<ul style="list-style-type: none"> • System: POWER, FAN1, FAN2 (Green) • TP Port 1 to 24: LINK/SPD/ACT(Green), PoE (Green) • SFP Port 21 to 24: LINK/ACT (Green)
Power Consumption	<ul style="list-style-type: none"> • Max. 15W (in case no PD device connected) • Max. 185W (with 12 * 15.4W PD device connected) • Max. 380W (with 24 * 15.4W PD device connected)
Power Supply Environment	<ul style="list-style-type: none"> • Internal Power supply 100~240VAC, 50/60 Hz
Dimension	<ul style="list-style-type: none"> • 44 * 442 * 248 mm (RP-PEG244I+) • 44 * 442 * 366 mm (RP-PEG244IF+)
Certification	<ul style="list-style-type: none"> • FCC, CE

Application



Ordering information

RP-PEG244I+ 24-P Gigabit L2+ Managed PoE Switch, w/ 4 SFP(185W)
RP-PEG244IF+ 24-P Gigabit L2+ Managed PoE Switch, w/ 4 SFP (380W)