



>> RP-1708I

8-P Fast Ethernet Managed Switch



The device is a cost-effective, high-performance 8 * RJ-45 ports 10/100Mbps Ethernet/Fast Ethernet managed switch with Broadcom solution. This switch supports remote managed function by SNMP, HTTP and Telnet operations. The device supports lots of functions for a L2 switch managed, e.g. 802.1Q VLAN, 802.1x Port Security, Rate Control, Port Configuration, Port Mirroring, Port Statistics, QoS functions. Auto-MDIX function is also supported for every port of the switch for easy cable connection.

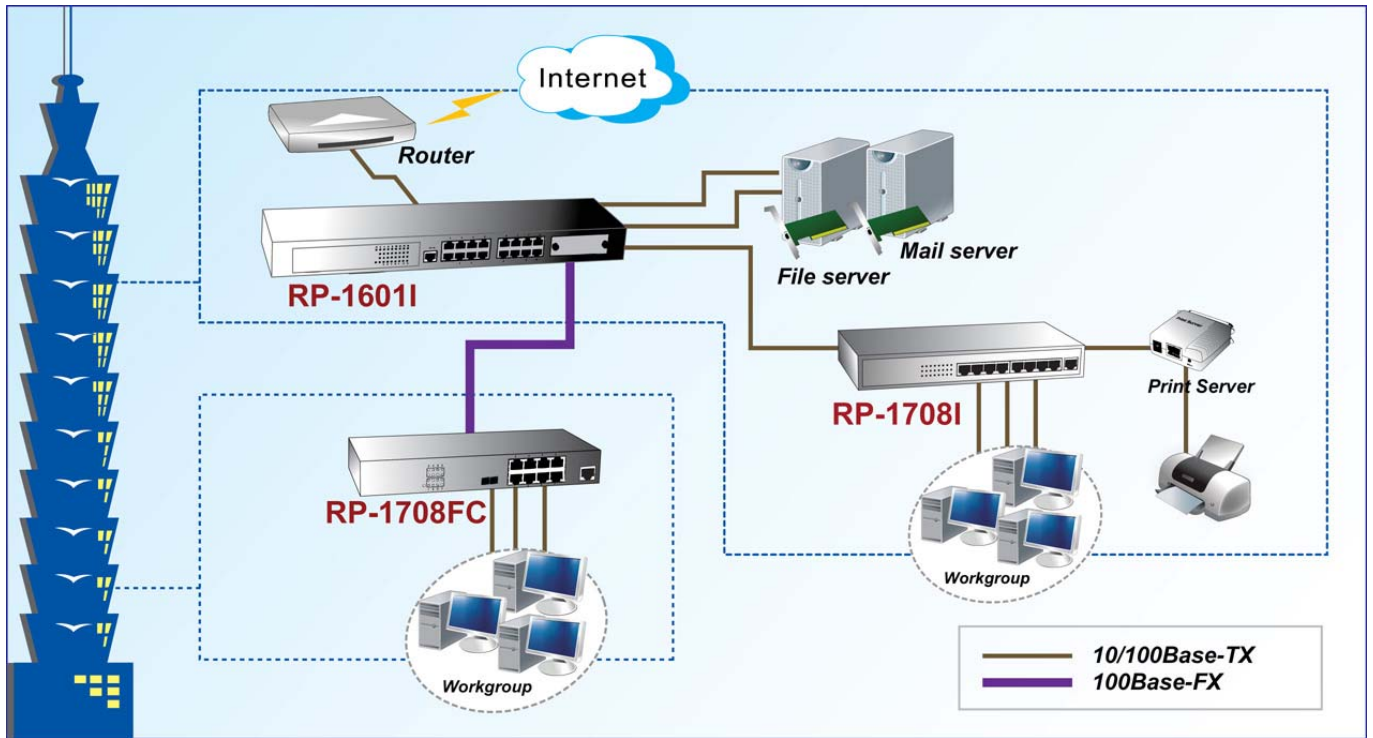
Feature

- Support out-band console and in-band SNMP/Http/Telnet management interface
- Prevents packet loss with back pressure and IEEE802.3x flow control functions
- Support Specify the service and IP address to control switch for management
- 4 priority queues are supported on each port for QoS application
- Support IEEE 802.1p Class of Service with 4-level priority queuing
- Support ToS/ DiffServ priority operation , WRR /SPQ scheduling algorithm
- Support IEEE 802.1Q VLAN
- Support Static Mac Address access limit on port
- Support IEEE 802.1x Port Security function
- Support IEEE 802.1w Rapid Spanning Tree function
- Support ingress/egress rate control on port (64K~100Mbps)
- Support broadcast / flooding / multicast traffic control
- Support IP Multicast with IGMP snooping and MVR function
- Support Loopback detection function
- Support DHCP client function
- Support RMON 1,2,3,9
- Support Text configuration download and upload
- Low Power consumption, no fan inside
- Support remote port configuration setting and status monitoring

Specification

Standards	<ul style="list-style-type: none"> • IEEE802.3(10BaseT Ethernet), IEEE802.3u(100Base Fast Ethernet), • IEEE802.1D, IEEE802.1P, IEEE802.1Q, IEEE802.1x, IEEE802.1w
Interface	<ul style="list-style-type: none"> • 8* RJ45 ports, with 10/100Mbps, Full/Half duplex auto-negotiation and Auto-MDIX function
Console Port	<ul style="list-style-type: none"> • RJ45 console port
Buffer Memory MAC Address	<ul style="list-style-type: none"> • 256K Bytes Packet Buffer • 4K Mac Table Size, 1536 Bytes Max Packet Size
Flow Control	<ul style="list-style-type: none"> • Back pressure for half duplex, IEEE802.3x for full duplex
Management	<ul style="list-style-type: none"> • Out-band : Console (Command Line Interface) • In-band : SNMP/Telnet/Http
SNMP agent	<ul style="list-style-type: none"> • Version. I, II, III • Support MIB II(Interface), Bridge MIB, Etherlike MIB, Private MIB
VLAN	<ul style="list-style-type: none"> • 802.1Q VLAN, 256 co-current groups maximum from eight active VLAN ID blocks
QoS	<ul style="list-style-type: none"> • Four priority queues per port, Port-based & 802.1p tagged-based/ ToS / DiffServ priority operation , WRR /SPQ scheduling algorithm
Spanning Tree	<ul style="list-style-type: none"> • Support IEEE 802.1w Rapid Spanning Tree
Port Mirror	<ul style="list-style-type: none"> • Yes, for Egress/Ingress packets, support DA/SA filtering function
Static Mac ID Access Limit	<ul style="list-style-type: none"> • Yes, Limit on port
IEEE 802.1x	<ul style="list-style-type: none"> • Yes, Support Transparent and Authentication modes
Rate Control	<ul style="list-style-type: none"> • Yes, Limit on port for both Ingress/Egress traffic from 64Kbps to 100Mbps
IP Multicast	<ul style="list-style-type: none"> • Yes, Support IGMP Snooping and MVR function
Software Upgrade	<ul style="list-style-type: none"> • Out-band: Xmodem • In-band: TFTP
Text Configuration	<ul style="list-style-type: none"> • Yes, for easy edit
LED Indicators	<ul style="list-style-type: none"> • Per Port : Link/Activity, 100Mbps, FDX • Per Device : Power
Power Supply	<ul style="list-style-type: none"> • 5.5W
Power Consumption	<ul style="list-style-type: none"> • Internal Power supply: 100~240VAC, 50/60 Hz
Environment	<ul style="list-style-type: none"> • Operating Temperature : 0°C to 50°C • Operating Humidity: 5% to 95% (Non-Condensing)
Dimension	<ul style="list-style-type: none"> • 250 * 117 * 37mm
Certifications	<ul style="list-style-type: none"> • FCC, CE

Application



Ordering information

RP-1708I

8-P Fast Ethernet Managed Switch

REPOTEC CO., LTD.

3F., No.258, Liancheng Rd., Zhonghe District., New Taipei City 235, Taiwan

TEL: 886-2-8227-1888 FAX: 886-2-8227-1818