

RP-G2404WD

24-P Gigabit + 4 SFP Slot Web Smart Switch



RP-G2404WD, 24-Ports Gigabit Web Smart Switch, provides you 24*10/100/1000Mbps gigabit ports which lead you to a real gigabit connection and hence boost your networking throughput easily. Users are now able to transfer high bandwidth-demanded files faster and get a real efficiency improvement with the user-friendly Web-based management interface. This product also equips 4 mini-GBIC slots providing more flexible fiber connections. Use of the mini-GBIC port disables the connection of its corresponding copper port automatically.

The management functionalities provide efficient network usage. VLAN reduces the collisions from widely broadcasting. Port Aggregation enlarges the bandwidth of backbone connection. QoS is supported to secure the bandwidth for some bandwidth-demanded applications including VoIP or videoconference. The IEEE802.3x and backpressure flow control mechanisms are also supported to ensure the correctness of data transmitting.

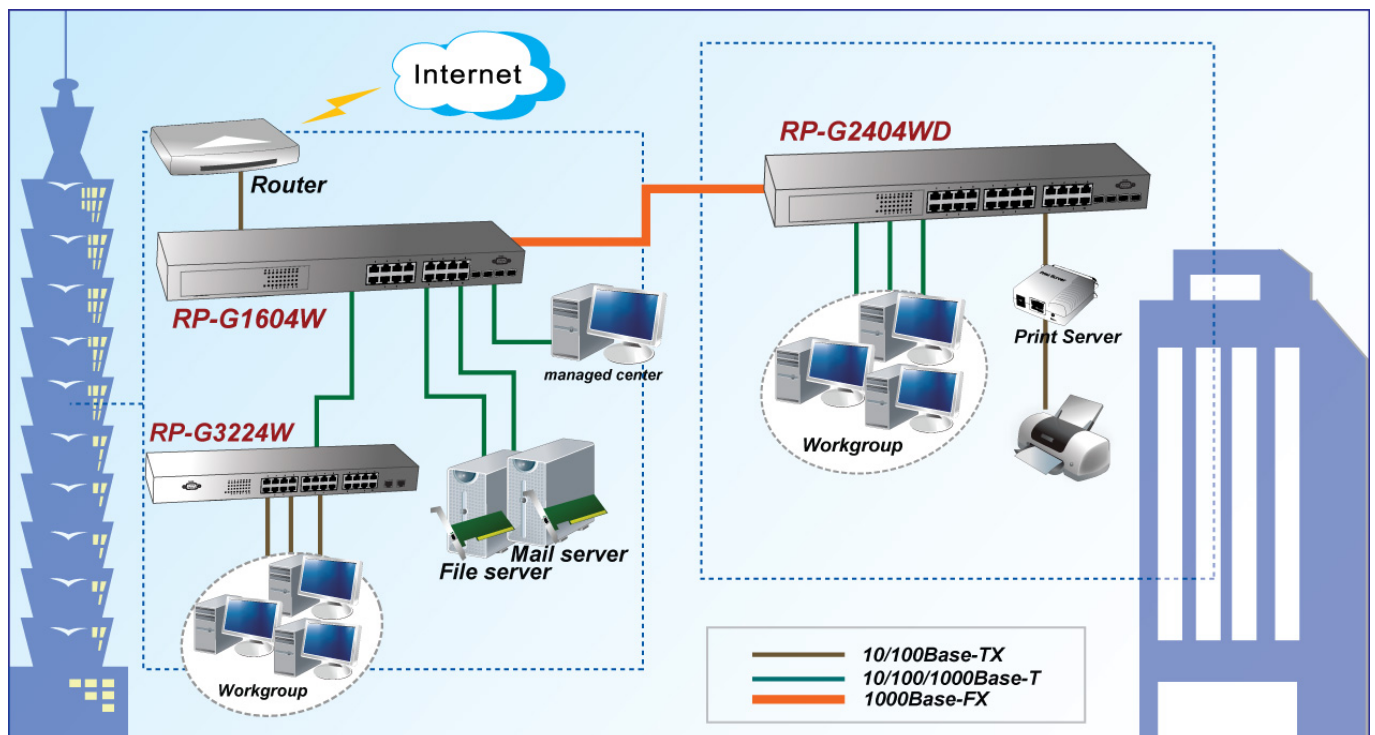
Feature

- Auto-detection for mini GBIC module inset
- Auto-discovery Function for easy management
- Supports Port Mirror
- Supports port aggregation up to 8 groups
- Supports QoS function, port base, tag base, DSCP priority
- Supports Rate Limit (ICMP Rate, Broadcast Rate, Multicast Rate, Ingress/Egress)
- Supports full duplex flow control and half duplex back pressure
- Non-blocking wire-speed switching performance
- Provides 8K MAC address entries and 16 groups VLAN table
- Support RSTP, 802.1x, IGMP Snooping
- Supports firmware upgrade, SNMP
- Supports Jumbo frame 9K bytes
- Supports 500K bytes buffer Memory
- Supports Web-based management interface
- Support power saving function

Specification

Standards	• IEEE802.3, 802.3u, 802.3x, 802.3ab/z 802.1q standards
Interface	• 24 * 10/100/1000 Mbps RJ-45 ports • Port 21, 22, 23, 24 are TP/SFP Fiber /SFP Auto-sensing
Memory	• Supports 500K bytes buffer Memory • Provide 8K MAC address entries, 9K bytes jumbo frame
Vlan	• Tag base Vlan, Support 16 groups VLAN table
Trunking	• Supports Port Trunking up to 8 ports and 12 groups port aggregation
QoS	• Support QoS function, Port base, Tag base, DSCP priority
Rate Control	• Support Rate Limit (ICMP Rate, Broadcast Rate, Multicast rate, ingress/Egress)
LEDs Indicator	• 1* Power(green), 24*10/100M LINK/ACT (green), 24* 1000M Link/ACT
Power Supply	• Internal power supply 100~240VAC
Environment	• Operating Temperature: 0°~40°C • Operating Humidity: 10%~90% (Non-Condensing)
Dimension	• 441 * 130 * 44 mm
Certification	• FCC, CE

Application



Ordering information

RP-G2404WD 24-P Gigabit + 4 SFP Slot Web Smart Switch

REPOTEC CO., LTD.

3F, No.258, Lian Cheng Rd., Chung Ho City, Taipei Hsien 235, TAIWAN
TEL: 886-2-8227-1888 FAX: 886-2-8227-1818