

RP- G2400DvB

24-P Gigabit Ethernet Switch

Easily boost your networking throughput, the rack-mountable switch provides

16/24*10/100/1000Mbps Gigabit ports that lead you to a real Gigabit connection. Users are now able to transfer large and high bandwidth-needed files quick and therefore get a real efficiency improvement.

The switch offers users with fast and reliable network. The store-and-forward architecture filters errors and forwards packets in a non-blocking environment. Flow control ensures the correctness of data transmitting. The 802.3x and backpressure flow control mechanisms work respectively for full and half duplex modes.



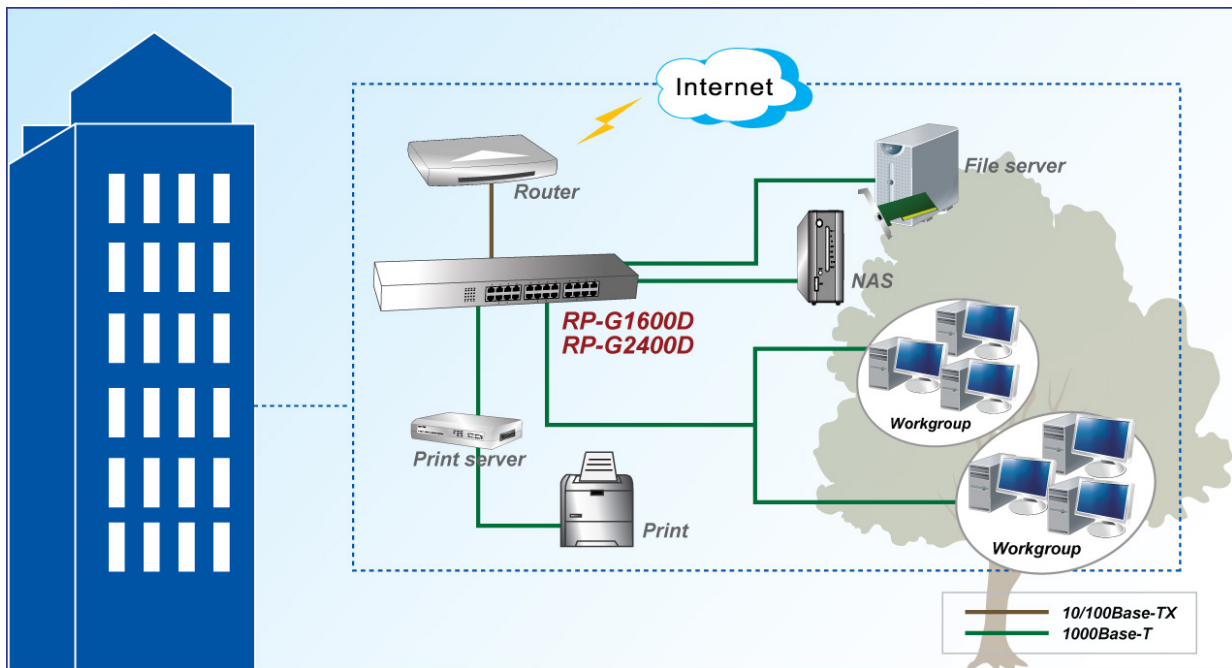
Feature

- (10/100/1000Mbps) and duplex mode (Half/Full) auto-detection
- Supports MDI/MDI-X auto crossover
- Supports full and half duplex operation on all ports
- Supports back-pressure (half duplex) and flow control (IEEE 802.3x)
- Wire-speed packet filtering and forwarding rate
- Store-and-forward architecture filters fragment & CRC error packets
- Supports 16K MAC address entries in whole system
- 448K Bytes buffer memory
- Support 9K bytes Jumbo Frames
- Fanless design

Specification

Standards	<ul style="list-style-type: none"> • 802.3 Ethernet, 802.3u Fast Ethernet, 802.3x Flow Control, 802.3ab Gigabit Ethernet
Interface	<ul style="list-style-type: none"> • 24* 10/100/1000Mbps RJ-45 switching ports
Protocol	<ul style="list-style-type: none"> • Network speed: 10 / 100 / 1000Mbps • 10Mbps: Full/Half duplex • 100Mbps: Full/Half duplex • 1000Mbps: Full duplex
LED indicators	<ul style="list-style-type: none"> • Per Unit: Power • Per Port: Activity/Link
Power Supply	<ul style="list-style-type: none"> • Internal Power Supply 100~240VAC, 50~60Hz
Environment	<ul style="list-style-type: none"> • Operating Temperature: 0° – 40°C • Operating Humidity: 10% ~ 90% (non-condensing)
Dimension	<ul style="list-style-type: none"> • 441 * 130 * 44mm
Certification	<ul style="list-style-type: none"> • FCC, CE

Specification



Ordering information

RP- G2400DvB 24-P Gigabit Ethernet Switch