

RP-1024W

24-P Fast Ethernet Web Smart Switch

The device is a powerful, smart and high-performance 24 ports 10/100Mbps Fast Ethernet Switch. It provides the easy management function through the Ethernet Web. The network administrator can configure the device's status and the port function setting through the Ethernet Web. It provides powerful web management page and firmware upgrades.

Moreover the rich diagnostic LEDs on the front-panel for providing the operating status of individual port and whole system.



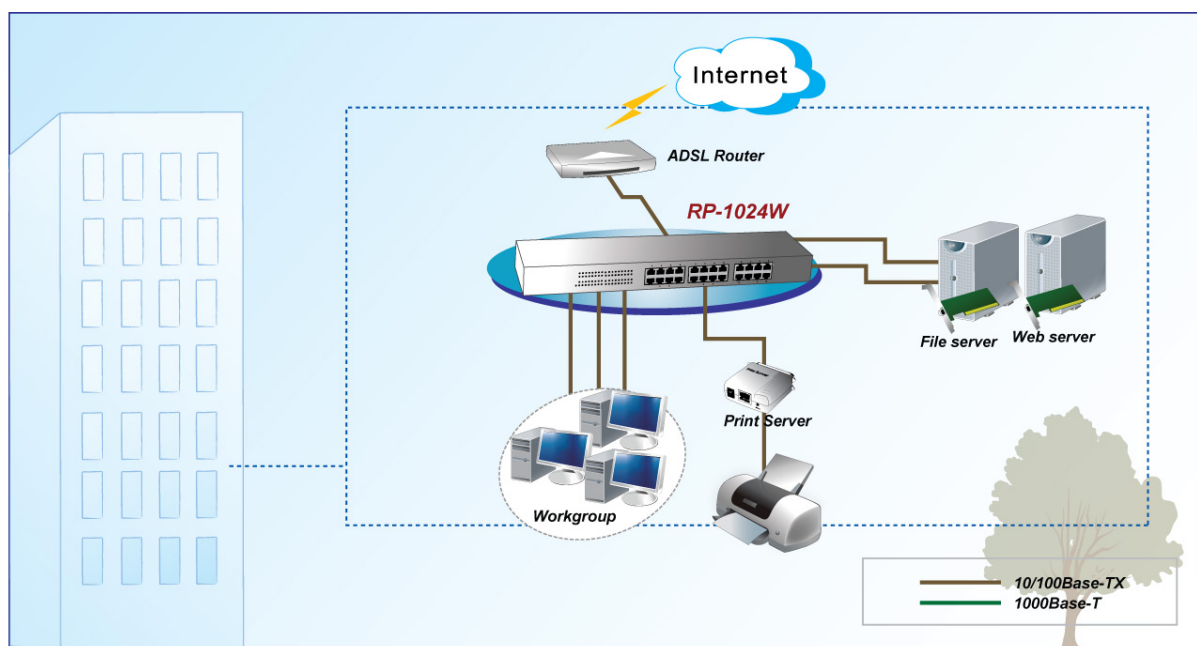
Feature

- 4.8Gbps switching fabric capacity
- Support link aggregation
- Support port-based VLAN and tag-base VLAN
- Support port mirroring
- Supports QOS
- Support MAC Binding
- Support TCP, UDP filtering
- Support web-based management
- Support firmware upgrade based on web
- Support parameter backup and recovery

Specification

Standards	<ul style="list-style-type: none"> • IEEE802.3, 802.3u, 802.3x, 802.1p
Interface	<ul style="list-style-type: none"> • 24 * 10Base-T/ 100Base-TX RJ45 ports, • One RS-232 console port
LED	<ul style="list-style-type: none"> • PWR, LINK/ACT, SPEED
Cabling Type	<ul style="list-style-type: none"> • 10BASE –T: UTP Cat. 3 or up • 100BASE-TX: UTP Cat. 5 or up
L2Features	<ul style="list-style-type: none"> • Port Configuration(Speed, Duplex, Flow Control) • Port Statistic (Receive/Send pkts, Receive Error pkts, etc..) • Port Analysis • 802.1D Spanning Tree • IGMP Snooping • Link Aggregation • Port Mirroring (One to One, Many to One)
VLAN	<ul style="list-style-type: none"> • Standard: 802.1Q • Static VLAN Groups: 4K
Quality of Service (QoS)	<ul style="list-style-type: none"> • 802.1p Priority Queues: 4 Queues • Switch Port Based QoS • 802.1p Priority Based QoS • IP DSCP Priority Based QoS • Support WRR/ Strict Mode
Network Access/Security	<ul style="list-style-type: none"> • MAC Binding • Broadcast Storm Control
Bandwidth Control	<ul style="list-style-type: none"> • Egress Bandwidth Control • Ingress Bandwidth Control
Management	<ul style="list-style-type: none"> • Web-based GUI
Environment	<ul style="list-style-type: none"> • Operating Temperature: 0° - 40°C • Operating Humidity: 5% ~ 90% (non-condensing)
Dimension	<ul style="list-style-type: none"> • 432 * 200 * 44 mm
Certification	<ul style="list-style-type: none"> • FCC, CE

Application



Ordering information

RP-1024W 24-P Fast Ethernet Web Smart Switch