

RP- G3800UC

8-P Gigabit Ethernet Switch

This device is a powerful and high-performance 10/100/1000Mbps Gigabit Ethernet switch with 8 * 10/100/1000Mbps Gigabit Ethernet ports. Moreover, it provides a backbone link to your switched workgroup or a server fat-pipe link. With such flexible architecture, users can easily plan the network without bandwidth and media limitation.

With 16Gbps switch bandwidth, the switch is fully non-blocking architecture can support every switching port wire-speed performance. Compared to the shared 10/100/1000Mbps networks, the switch delivers a dedicated 10/100/1000Mbps connection to every attached client with no bandwidth congestion issue. Store-and-forward switching mode promises the low latency plus eliminates all the network errors, including runt and CRC error packets.

The switch provides half and full-duplex capability on all ports to boost bandwidth for servers and power users and is fully compliant with all kinds of network protocols. Moreover, the rich diagnostic LEDs on the front-panel provides the operating status of individual port and whole system.



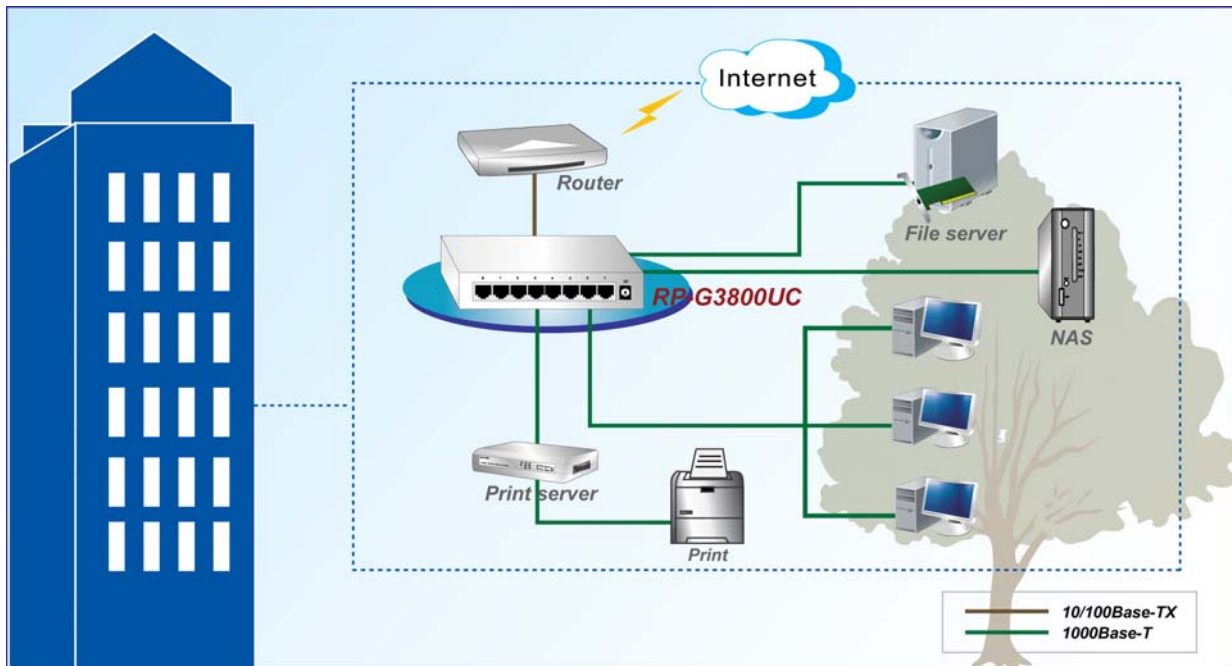
Feature

- 8 * 10/100/1000M RJ-45 ports
- Supports protocol for speed (10/100/1000Mbps) and duplex mode (Half/Full) auto-detection
- Supports MDI/MDI-X auto crossover
- Supports full and half duplex operation on all ports
- Supports back-pressure (half duplex) and flow control (IEEE 802.3x)
- Wire-speed packet filtering and forwarding rate
- Store-and-forward architecture filters fragment & CRC error packets
- Supports extensive LED indicators for network diagnostics

Specification

Standards	<ul style="list-style-type: none">• 10BASE-T specifications of the IEEE802.3 standard• 100BASE-TX specifications of the IEEE802.3u standard• 1000BASE-T specifications of the IEEE802.3ab standard
Interface	<ul style="list-style-type: none">• 8-10/100/1000Mbps RJ-45 switching ports• 1-Power
NWay Protocol Support	<ul style="list-style-type: none">• 10Mbps: Full/Half duplex• 100Mbps: Full/Half duplex• 1000Mbps: Full duplex only
LED indicators	<ul style="list-style-type: none">• PWR: Green• 1-8: Green
Buffer Memory	<ul style="list-style-type: none">• 1M Bits
MAC address	<ul style="list-style-type: none">• Supports 8K MAC address entries in whole system
Jumbo frame	<ul style="list-style-type: none">• 9K Byte
Power Supply	<ul style="list-style-type: none">• External power adapter DC9V 800mA
Environment	<ul style="list-style-type: none">• Operating Temperature: 0°C~40°C• Operating Humidity: 5%~90% (Non-Condensing)
Dimension	<ul style="list-style-type: none">• 148 * 100 * 29 mm
Certification	<ul style="list-style-type: none">• FCC, CE

Specification



Ordering information

RP- G3800UC 8-P Gigabit Ethernet Switch